

Abyss  Habidecor

FINEST TOWELS & RUGS · PORTUGAL

Abyss  Habidecor  
FINEST TOWELS & RUGS · PORTUGAL



## Emerald

Abyss and Habidecor are located in the heart of Portugal, next to the beautiful medieval city of Viseu. With over 40 years of experience, Abyss and Habidecor set the standard in the manufacturing of high-quality luxury bath linens. These are made of the extraordinary and soft Egyptian Extra Long Staple cotton from Giza. Our devoted team of artisans, with its extended experience and craftsmanship, is dedicated to realise all of your dreams.

The Emerald is the gemstone that represents the 40th Anniversary of our unique company. We sprinkled this special color into our latest collection to express our Emerald celebration. This mystical green embodies peace and balance corresponding to our sustainable and green manufacturing practices — denoted by our decade's long Oeko-Tex certification, a guarantee that you are acquiring a responsibly produced and safe product.

40  
YEARS



# ECOLOGICAL PRODUCTION PROCESS

The Oeko-Tex label obtained by the company is the fruit of a demonstrated commitment to invest in biological water treatment and the use of biodegradable products.



# THE **BEST COTTON** IN THE WORLD

**Certified Extra Long Staple Giza Cotton** is recognized as the **Finest Cotton in the World** and is used for Abyss & Habidecor, towels and bathrobes. Cultivated on the banks of the Nile, the cotton is picked by hand. The fiber is treated to create yarn of exceptional quality resulting in superior softness, absorbency, durability and elegance.



# Made in . Made by . Made of Portugal

Started over 40 years ago, Abyss & Habidecor are the realized dreams woven by our founder, Celso de Lemos: creating the best towels and rugs in the world made in Portugal, his homeland. In a location up high, between beaches and vineyards, the city of Viseu, in the center of Portugal, is home to the Abyss & Habidecor production units.

The whole Abyss & Habidecor team has devoted its expertise to bath linens with a craft steeped in tradition. The craftwork to which the Abyss & Habidecor workers devote themselves day after day is guided by a commitment to excellence.



# MUST

100% GIZA - EGYPTIAN COTTON LONG STAPLE | 2000g/m<sup>2</sup>



ca.  
80x160cm  
ca.31"x63"

ca.  
70x120cm  
ca.27"x47"

ca.  
60x100cm  
ca.23"x39"

ca.  
50x80cm  
ca.20"x31"

ca.  
60x60cm  
ca.23"x23"

ca.  
60x60cm  
ca.23"x23"  
CT

CUSTOM SIZES & COLOURS AVAILABLE



# REVERSIBLE

100% GIZA - EGYPTIAN COTTON LONG STAPLE | 2200g/m<sup>2</sup>



CUSTOM SIZES & COLOURS AVAILABLE



# AGATHA

96% GIZA - EGYPTIAN COTTON LONG STAPLE | 3% ACRYL | 1% Lurex | 2200g/m<sup>2</sup>



800

ca.  
70x120cm  
ca.27"x47"

ca.  
60x100cm  
ca.23"x39"





# AQUAZURA

100% GIZA - EGYPTIAN COTTON LONG STAPLE | 1900g/m<sup>2</sup>



320

ca.  
Ø 100 cm

ca. Ø 39"



# AVRIL

100% GIZA - EGYPTIAN COTTON LONG STAPLE | 1900g/m<sup>2</sup>



840

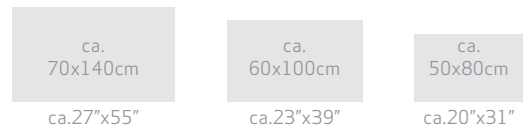
ca.  
Ø 150 cm

ca. Ø 59"



# BAY

100% GIZA - EGYPTIAN COTTON LONG STAPLE | 2200g/m<sup>2</sup>



CUSTOM COLOURS AVAILABLE



# BOSA

55% GIZA - EGYPTIAN COTTON LONG STAPLE | 45% ACRYL | 1900g/m<sup>2</sup>



553

ca.  
70x120cm

ca.27"x47"



# BRIGHTON

60% GIZA - EGYPTIAN COTTON LONG STAPLE | 40% ACRYL | 1800g/m<sup>2</sup>



100



101



210



930

ca.  
70x140cm  
ca.27"x55"

ca.  
60x100cm  
ca.23"x39"

ca.  
50x80cm  
ca.20"x31"



# CARARE

90% GIZA - EGYPTIAN COTTON LONG STAPLE | 5% ACRYL | 5% LUREX | 2200g/m<sup>2</sup>



900

ca.  
75x125cm

ca.29"x49"



# CASTEL

80% GIZA - EGYPTIAN COTTON LONG STAPLE | 15% ACRYL | 5% LUREX | 2200g/m<sup>2</sup>



900

ca.  
70x120cm

ca.27"x47"



# COCOTTE

100% GIZA - EGYPTIAN COTTON LONG STAPLE | 1900g/m<sup>2</sup>



840

ca.  
65x120cm

ca.25"x47"



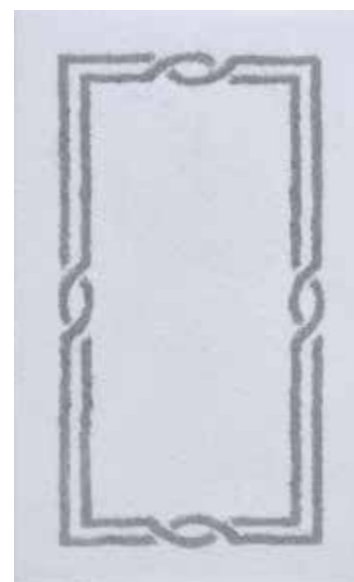


# CROSS

90% GIZA - EGYPTIAN COTTON LONG STAPLE | 5% ACRYL | 5% LUREX | 2200g/m<sup>2</sup>



800



900



998

ca.  
70x120cm  
ca.27"x47"

ca.  
60x100cm  
ca.23"x39"

ca.  
50x80cm  
ca.20"x31"



# DALHIA

100% GIZA - EGYPTIAN COTTON LONG STAPLE | 1900g/m<sup>2</sup>



535

ca.  
Ø 100 cm  
ca. Ø 39"



# DAMAS

80% GIZA - EGYPTIAN COTTON LONG STAPLE | 20% ACRYL | 1900g/m<sup>2</sup>



515

ca.  
Ø 100 cm  
ca. Ø 39"



# DANA

100% GIZA - EGYPTIAN COTTON LONG STAPLE | 2000g/m<sup>2</sup>



519

ca.  
Ø 120 cm

ca. Ø 47"



# DANXIA

90% GIZA - EGYPTIAN COTTON LONG STAPLE | 5% ACRYL | 5% LUREX | 2200g/m<sup>2</sup>



800

ca.  
70x120cm

ca.27"x47"

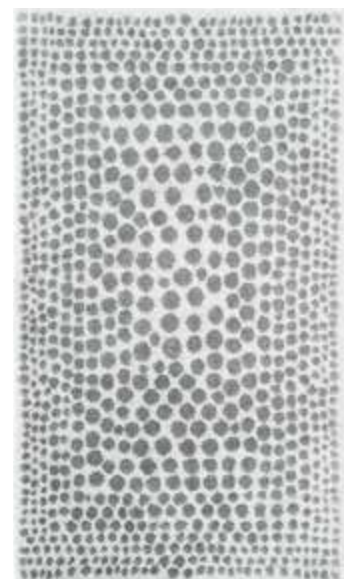


# DOLCE

60% GIZA - EGYPTIAN COTTON LONG STAPLE | 20% ACRYL | 20% LUREX | 2200g/m<sup>2</sup>



800



900

ca.  
70x120cm  
ca.27"x47"

ca.  
60x100cm  
ca.23"x39"

ca.  
50x80cm  
ca.20"x31"

# DOUBLE

100% GIZA - EGYPTIAN COTTON EXTRA LONG STAPLE | 1200g/m<sup>2</sup>



ca.  
60x100cm  
ca.23"x39"

ca.  
50x80cm  
ca.20"x31"



# DYNASTY

80% GIZA - EGYPTIAN COTTON LONG STAPLE | 10% ACRYL | 10% LUREX | 2200g/m<sup>2</sup>



220

ca.  
140x200cm  
ca.55"x78"



770

ca.  
70x140cm  
ca.27"x55"



993

ca.  
60x100cm  
ca.23"x39"

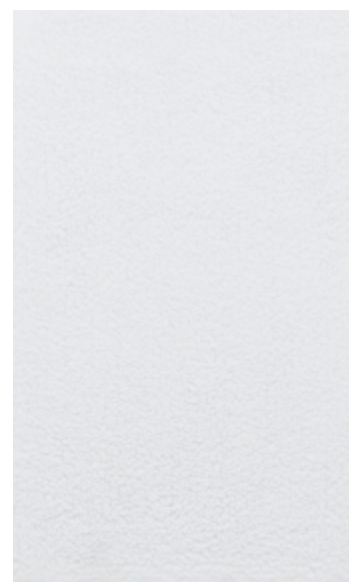
ca.  
50x80cm  
ca.20"x31"



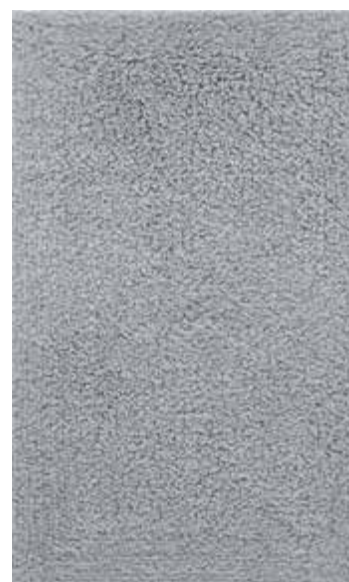


# ELYSEE

80% GIZA - EGYPTIAN COTTON LONG STAPLE | 10% ACRYL | 10% LUREX | 3200g/m<sup>2</sup>



110



900



990

ca.  
70x120cm  
ca.27"x47"

ca.  
60x100cm  
ca.23"x39"

ca.  
50x80cm  
ca.20"x31"

CUSTOM SIZES AVAILABLE



# EMERALD

100% GIZA - EGYPTIAN COTTON LONG STAPLE | 1900g/m<sup>2</sup>



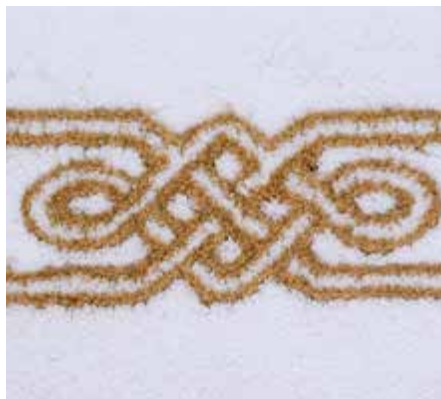
302

ca.  
75x120cm  
ca.29"x47"



# EMSER

90% GIZA - EGYPTIAN COTTON LONG STAPLE | 5% ACRYL | 5% LUREX | 2200g/m<sup>2</sup>



800



900



998

ca.  
70x120cm  
ca.27"x47"

ca.  
60x100cm  
ca.23"x39"

ca.  
50x80cm  
ca.20"x31"



# FELITSA

90% GIZA - EGYPTIAN COTTON LONG STAPLE | 5% ACRYL | 5% LUREX | 2200g/m<sup>2</sup>



800

ca.  
70x120cm

ca.27"x47"



# FEUILLE

100% GIZA - EGYPTIAN COTTON LONG STAPLE | 1900g/m<sup>2</sup>



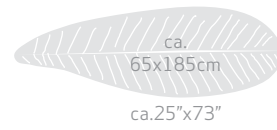
165



725



770



ca.  
65x185cm

ca.25"x73"



# FINO MAT

100% GIZA - EGYPTIAN COTTON EXTRA LONG STAPLE | 1100g/m<sup>2</sup>



302



332



770

ca.  
60x100cm  
ca.23"x39"

ca.  
50x80cm  
ca.20"x31"



# FIORE

100% GIZA - EGYPTIAN COTTON LONG STAPLE | 1900g/m<sup>2</sup>



400

ca.  
Ø 125cm  
ca. Ø 49"



# FIRST

54% GIZA - EGYPTIAN COTTON LONG STAPLE | 37% ACRYL | 9% LUREX | 2200g/m<sup>2</sup>



900

ca.  
70x120cm

ca.27"x47"





# JAVA

80% GIZA - EGYPTIAN COTTON LONG STAPLE | 20% ACRYL | 1900g/m<sup>2</sup>



205



205

ca.  
70x120cm  
ca.27"x47"

ca.  
70x70cm  
ca.27"x27"



# KAPI

80% GIZA - EGYPTIAN COTTON LONG STAPLE | 20% MODAL | 2200g/m<sup>2</sup>



603

ca.  
70x120cm

ca.27"x47"



# KARAT

90% GIZA - EGYPTIAN COTTON LONG STAPLE | 5% ACRYL | 5% LUREX | 2500g/m<sup>2</sup>



800



900

ca.  
70x120cm  
ca.27"x47"

ca.  
60x100cm  
ca.23"x39"

ca.  
50x80cm  
ca.20"x31"

CUSTOM SIZES AVAILABLE



# KYOTO

55% GIZA - EGYPTIAN COTTON LONG STAPLE | 35% ACRYL | 10% LUREX | 2200g/m<sup>2</sup>



110



800



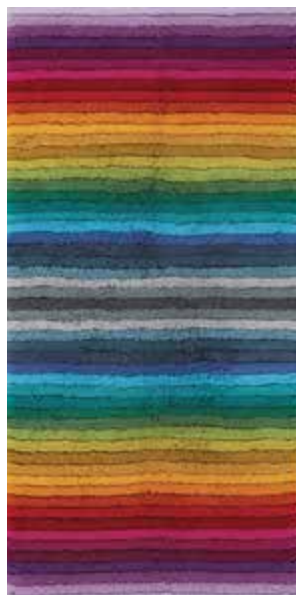
900

ca.  
90x100cm  
ca. 35"x39"



# LARRY

100% GIZA - EGYPTIAN COTTON LONG STAPLE | 2000g/m<sup>2</sup>



400



400

ca.  
70x150cm  
ca.27"x59"

ca.  
70x75cm  
ca.27"x30"



# LAURIE

90% GIZA - EGYPTIAN COTTON LONG STAPLE | 5% ACRYL | 5% LUREX | 2200g/m<sup>2</sup>



800

ca.  
70x120cm  
ca.27"x47"

ca.  
60x100cm  
ca.23"x39"

ca.  
50x80cm  
ca.20"x31"



# LEOPARD

60% GIZA - EGYPTIAN COTTON LONG STAPLE | 40% ACRYL | 1900g/m<sup>2</sup>



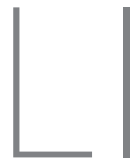
990

ca.  
140x200cm  
ca.55"x78"

ca.  
70x120cm  
ca.27"x47"

ca.  
60x100cm  
ca.23"x39"





85% GIZA - EGYPTIAN COTTON LONG STAPLE | 10% ACRYL | 5% LUREX | 2200g/m<sup>2</sup>



800

ca.  
70x120cm

ca.27"x47"





# LIN

60% LINEN | 40% GIZA - EGYPTIAN COTTON LONG STAPLE | 2500g/m<sup>2</sup>



100



101



840



940



990

ca.  
70x120cm  
ca.27"x47"

ca.  
60x100cm  
ca.23"x39"

ca.  
50x80cm  
ca.20"x31"



# MALIBU

100% GIZA - EGYPTIAN COTTON LONG STAPLE | 2000g/m<sup>2</sup>



302

ca.  
100x200cm  
ca.39"x78"

ca.  
70x140cm  
ca.27"x55"



# MARTINIQUE

80% GIZA - EGYPTIAN COTTON LONG STAPLE | 20% ACRYL | 1900g/m<sup>2</sup>



850

ca.  
Ø 85cm

ca. Ø 33"



# MEADOW

90% GIZA - EGYPTIAN COTTON LONG STAPLE | 5% ACRYL | 5% LUREX | 2200g/m<sup>2</sup>



800

ca.  
190x300cm

ca.74"x118"

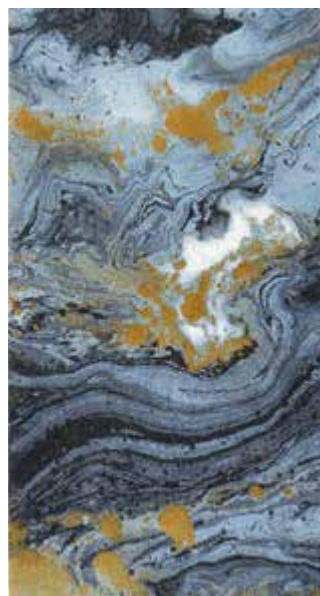
ca.  
100x150cm

ca.39"x59"



# MIDNIGHT

65% GIZA - EGYPTIAN COTTON LONG STAPLE | 30% ACRYL | 5% LUREX | 2200g/m<sup>2</sup>



800

ca.  
80x150cm

ca.31"x59"



# MUSA

75% GIZA - EGYPTIAN COTTON LONG STAPLE | 25% ACRYL | 1900g/m<sup>2</sup>



165

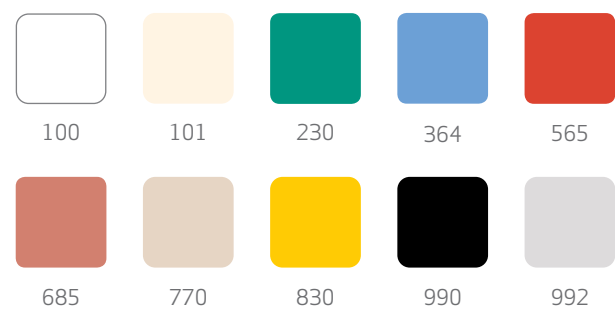
ca.70x140cm

ca.27"x55"



# NEW TWIST

100% COTTON | 1900g/m<sup>2</sup>



ca.  
70x120cm  
ca.27"x47"

ca.  
55x90cm  
ca.21"x35"

ca.  
Ø 60 cm  
ca.Ø 23"



# NUAGE

85% GIZA - EGYPTIAN COTTON LONG STAPLE | 15% ACRYL | 1900g/m<sup>2</sup>



330

ca.  
70x120cm

ca.27"x47"





# ORIGINE

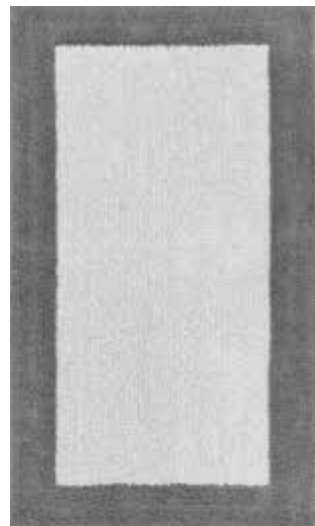
100% GIZA - EGYPTIAN COTTON LONG STAPLE | 2200g/m<sup>2</sup>



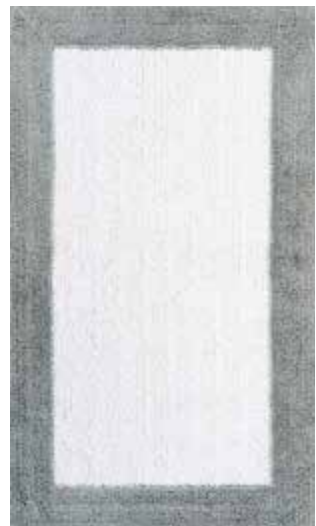
101



770



920



992

ca.  
70x120cm  
ca.27"x47"

ca.  
60x100cm  
ca.23"x39"

ca.  
50x80cm  
ca.20"x31"

ca.  
60x60cm  
ca.23"x23"  
CT

CUSTOM SIZES & COLOURS AVAILABLE



# OROSEI

75% GIZA - EGYPTIAN COTTON LONG STAPLE | 15% MODAL | 10% ACRYL | 2200g/m<sup>2</sup>



770

ca.  
Ø 100cm  
ca. Ø 39"



# PAROS

90% GIZA - EGYPTIAN COTTON LONG STAPLE | 5% ACRYL | 5% LUREX | 2200g/m<sup>2</sup>



800

ca.  
70x120cm

ca.27"x47"



# PEACOCK

90% GIZA - EGYPTIAN COTTON LONG STAPLE | 5% ACRYL | 5% LUREX | 2200g/m<sup>2</sup>



800

ca.  
70x140cm

ca.27"x55"



# PEAU

75% GIZA - EGYPTIAN COTTON LONG STAPLE | 25% ACRYL | 2000g/m<sup>2</sup>



100



101



770



920

ca.  
95x110cm  
ca.37"x43"



# PERSE

80% GIZA - EGYPTIAN COTTON LONG STAPLE | 10% ACRYL | 10% LUREX | 2200g/m<sup>2</sup>



800

ca.  
70x125cm  
ca.27"x49"



992

ca.  
60x100cm  
ca.23"x39"



# RIVERSIDE

100% GIZA - EGYPTIAN COTTON LONG STAPLE | 1800g/m<sup>2</sup>



325

ca.  
190x300cm

ca.74"x118"

ca.  
100x150cm

ca.39"x59"



# ROC

100% GIZA - EGYPTIAN COTTON LONG STAPLE | 1800g/m<sup>2</sup>



711

ca.  
190x300cm

ca.74"x118"

ca.  
100x150cm

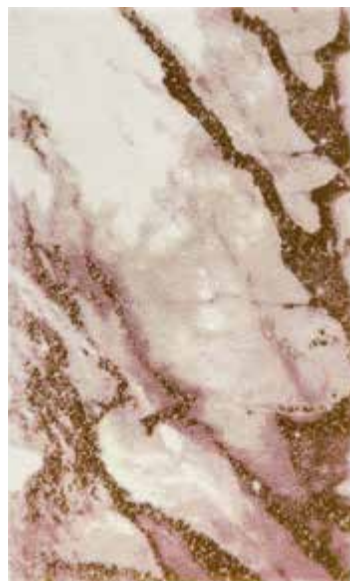
ca.39"x59"





# ROSY

90% GIZA - EGYPTIAN COTTON LONG STAPLE | 7% ACRYL | 3% LUREX | 2200g/m<sup>2</sup>



800

ca.  
70x120cm

ca.27"x47"



# RUST

100% GIZA - EGYPTIAN COTTON LONG STAPLE | 1900g/m<sup>2</sup>



325

ca.  
70x120cm

ca.27"x47"



# SAKURA

95% GIZA - EGYPTIAN COTTON LONG STAPLE | 5% MODAL | 2000g/m<sup>2</sup>



770

ca.  
80x150 cm  
ca.31"x59"



# SAXO MAT

100% GIZA - EGYPTIAN COTTON EXTRA LONG STAPLE | 1000g/m<sup>2</sup>



101



332



711



992

ca.  
60x100cm  
ca.23"x39"

ca.  
50x80cm  
ca.20"x31"



# SHAG

50% GIZA - EGYPTIAN COTTON EXTRA LONG STAPLE | 25% ACRYL | 25% SILK | 2500g/m<sup>2</sup>



100



101



230



992

ca.  
50x200cm  
ca.20"x78"

ca.  
70x140cm  
ca.27"x55"

ca.  
60x100cm  
ca.23"x39"

ca.  
60x60cm  
ca.23"x23"

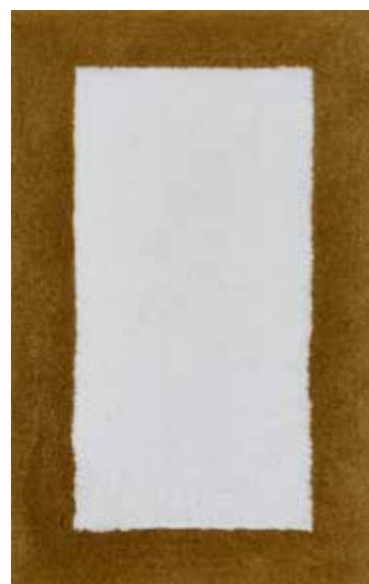
ca.  
50x80cm  
ca.20"x31"

CUSTOM SIZES AVAILABLE

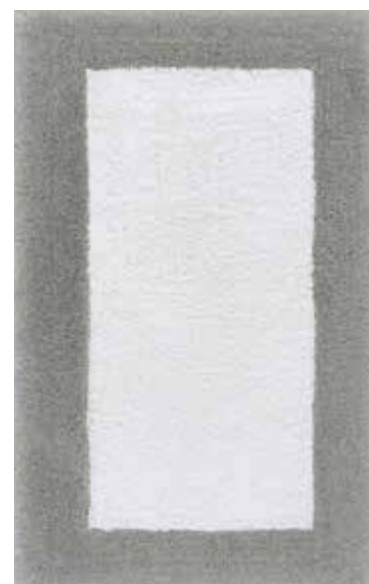


# SHINY

50% GIZA - EGYPTIAN COTTON LONG STAPLE | 40% ACRYL | 10% LUREX | 2500g/m<sup>2</sup>



800



900



998

ca.  
70x120cm  
ca.27"x47"

ca.  
60x100cm  
ca.23"x39"

ca.  
50x80cm  
ca.20"x31"



# STONE

100% GIZA - EGYPTIAN COTTON LONG STAPLE | 1900g/m<sup>2</sup>



770



990



993



770



990



993

ca.  
70x120cm  
ca.27"x47"

ca.  
70x90cm  
ca.27"x35"



# VINCE

100% GIZA - EGYPTIAN COTTON LONG STAPLE | 1900g/m<sup>2</sup>



737

ca.  
70x140cm

ca.27"x55"





# Richness in Possibilities

Abyss is an exclusive towel company.  
Habidecor is an exclusive rug company.

Egyptian Cotton Giza ELS (Extra Long Staple) is used to produce Abyss towels and bathrobes.  
Egyptian Cotton Giza (Long Staple) is used for the production of Habidecor bath rugs.

It is considered the best cotton in the World.  
Cultivated on the banks of the Nile, this cotton is handpicked, combed and twisted to create a yarn of exceptional quality.

By using premium and precious fibers, we can offer you wealthy bath linens in a rich range of possibilities.



# SUPER PILE

100% GIZA - EGYPTIAN COTTON EXTRA LONG STAPLE | 700g/m<sup>2</sup>



Mitt

17x22cm - 7"x9"

Wash Towel

30x30cm - 12"x12"

Guest Towel

30x50cm - 12"x20"  
40x60cm - 17"x24"

Hand Towel

40x75cm - 17"x30"  
55x100cm - 21"x39"  
60x110cm - 23"x43"

Bath Towel

70x140cm - 28"x54"

Bath Sheet

100x150cm - 39"x59"  
105x180cm - 40"x72"

CUSTOM SIZES & COLOURS AVAILABLE



# TWILL

100% GIZA - EGYPTIAN COTTON EXTRA LONG STAPLE | 500g/m<sup>2</sup>



Mitt

17x22cm - 7"x9"

Wash Towel

30x30cm - 12"x12"

Guest Towel

30x50cm - 12"x20"  
40x60cm - 17"x24"

Hand Towel

40x75cm - 17"x30"  
55x100cm - 21"x39"  
60x110cm - 23"x43"

Bath Towel

70x140cm - 28"x54"

Bath Sheet

100x150cm - 39"x59"  
105x180cm - 40"x72"

CUSTOM SIZES & COLOURS AVAILABLE



# ABELHA

100% GIZA - EGYPTIAN COTTON EXTRA LONG STAPLE | 550g/m<sup>2</sup>



100



309



770



940

Wash Towel

30x30cm - 12"x12"

Hand Towel

40x75cm - 17"x30"  
50x100cm - 20"x39"

Bath Towel

70x140cm - 28"x54"

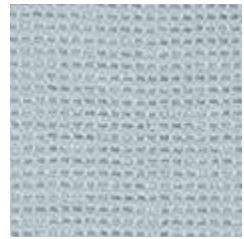
Bath Sheet

100x150cm - 39"x59"

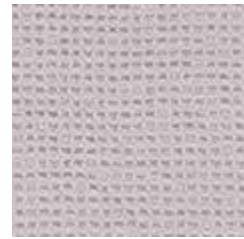


# BEEES

100% GIZA - EGYPTIAN COTTON EXTRA LONG STAPLE | 300g/m<sup>2</sup>



210



518



770



992

Wash Towel

30x30cm - 12"x12"

Hand Towel

40x75cm - 17"x30"

Hand Towel

65x110cm - 25"x43"

Bath Towel

65x140cm - 25"x54"

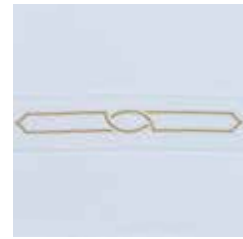
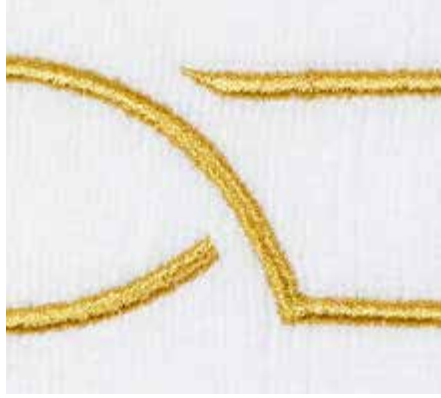
Bath Sheet

100x150cm - 39"x59"  
100x200cm - 39"x78"

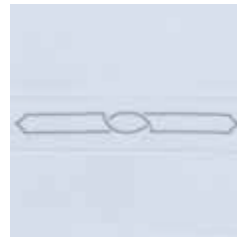


# CLUNY

100% GIZA - EGYPTIAN COTTON EXTRA LONG STAPLE | 550g/m<sup>2</sup>



108



109



998

Wash Towel

30x30cm - 12"x12"

Hand Towel

40x75cm - 17"x30"  
55x100cm - 21"x39"

Bath Towel

70x140cm - 28"x54"



# COZI

100% GIZA - EGYPTIAN COTTON EXTRA LONG STAPLE | 600g/m<sup>2</sup>



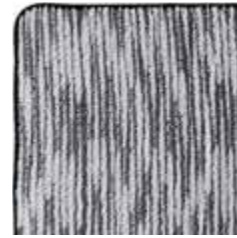
309



770



920



990

Wash Towel

30x30cm - 12"x12"

Hand Towel

40x75cm - 17"x30"  
55x100cm - 21"x39"

Bath Towel

70x140cm - 28"x54"

Bath Sheet

100x150cm - 39"x59"



# FIDJI

60% GIZA - EGYPTIAN COTTON EXTRA LONG STAPLE | 40% WOOD FIBER | 500g/m<sup>2</sup>



230



320



335



383



565



830

Wash Towel

30x30cm - 12"x12"

Hand Towel

40x75cm - 17"x30"  
55x100cm - 21"x39"  
60x110cm - 23"x43"

Bath Towel

70x140cm - 28"x54"

Bath Sheet

100x150cm - 39"x59"  
100x200cm - 39"x78"

CUSTOM SIZES & COLOURS AVAILABLE





# GLORIA

100% GIZA - EGYPTIAN COTTON EXTRA LONG STAPLE | 500g/m<sup>2</sup>



100



103



235



518



930

Wash Towel

30x30cm - 12"x12"

Hand Towel

40x75cm - 17"x30"  
55x100cm - 21"x39"

Bath Towel

70x140cm - 28"x54"

Bath Sheet

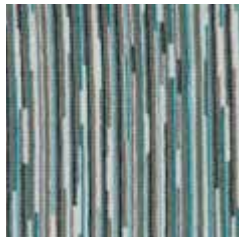
100x150cm - 39"x59"

CUSTOM SIZES & COLOURS AVAILABLE



# JACK

100% GIZA - EGYPTIAN COTTON EXTRA LONG STAPLE | 500g/m<sup>2</sup>



302

Wash Towel

30x30cm - 12"x12"

Hand Towel

40x75cm - 17"x30"  
55x100cm - 21"x39"  
60x110cm - 23"x43"

Bath Towel

70x140cm - 28"x54"

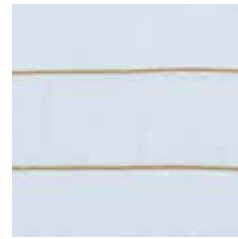
Bath Sheet

100x150cm - 39"x59"



# LARA

100% GIZA - EGYPTIAN COTTON EXTRA LONG STAPLE | 550g/m<sup>2</sup>



108



109

Wash Towel

30x30cm - 12"x12"

Hand Towel

40x75cm - 17"x30"  
55x100cm - 21"x39"

Bath Towel

70x140cm - 28"x54"



# LAUREN

100% GIZA - EGYPTIAN COTTON EXTRA LONG STAPLE | 550g/m<sup>2</sup>



108

Wash Towel

30x30cm - 12"x12"

Hand Towel

40x75cm - 17"x30"  
55x100cm - 21"x39"

Bath Towel

70x140cm - 28"x54"



# LINO

60% GIZA - EGYPTIAN COTTON EXTRA LONG STAPLE | 40 % LINEN | 550g/m<sup>2</sup>



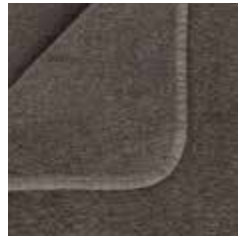
100



101



840



940



990

Mitt

17x22cm - 7"x9"

Wash Towel

30x30cm - 12"x12"

Guest Towel

30x50cm - 12"x20"

Hand Towel

40x75cm - 17"x30"  
60x110cm - 23"x43"

Bath Towel

70x140cm - 28"x54"

Bath Sheet

105x180cm - 40"x72"

CUSTOM SIZES AVAILABLE



# LULABI

100% GIZA - EGYPTIAN COTTON EXTRA LONG STAPLE | 500g/m<sup>2</sup>



302

Wash Towel

30x30cm - 12"x12"

Hand Towel

40x75cm - 17"x30"  
55x100cm - 21"x39"  
60x110cm - 23"x43"

Bath Towel

70x140cm - 28"x54"

Bath Sheet

100x150cm - 39"x59"



# METIS

100% GIZA - EGYPTIAN COTTON EXTRA LONG STAPLE | 500g/m<sup>2</sup>



101

Wash Towel

30x30cm - 12"x12"

Hand Towel

40x75cm - 17"x30"  
55x100cm - 21"x39"  
60x110cm - 23"x43"

Bath Towel

70x140cm - 28"x54"

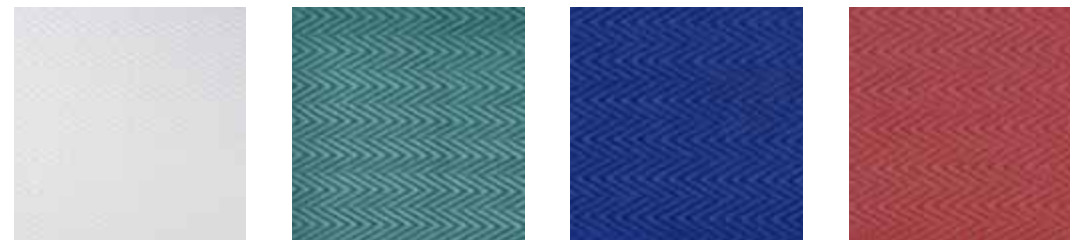
Bath Sheet

100x150cm - 39"x59"



# MONTANA

100% GIZA - EGYPTIAN COTTON EXTRA LONG STAPLE | 550g/m<sup>2</sup>

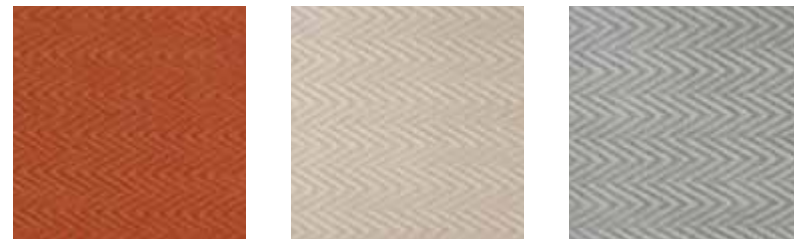


100

320

335

519



737

770

940

Wash Towel

30x30cm - 12"x12"

Hand Towel

40x75cm - 17"x30"  
55x100cm - 21"x39"

Bath Towel

70x140cm - 28"x54"

Bath Sheet

100x150cm - 39"x59"

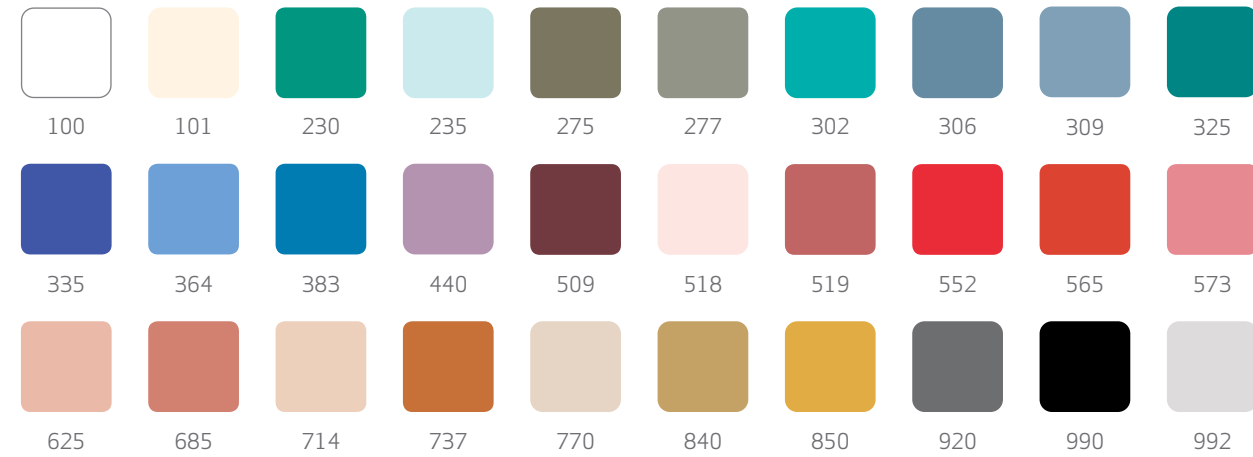
CUSTOM SIZES & COLOURS AVAILABLE





# POUSADA

100% GIZA - EGYPTIAN COTTON EXTRA LONG STAPLE | 300g/m<sup>2</sup>



Wash Towel

30x30cm - 12"x12"

Hand Towel

40x75cm - 17"x30"  
65x110cm - 26"x43"

Bath Towel

65x140cm - 25"x54"

Bath Sheet

100x150cm - 39"x59"

CUSTOM COLOURS AVAILABLE



# SPA

100% GIZA - EGYPTIAN COTTON EXTRA LONG STAPLE | 350g/m<sup>2</sup>



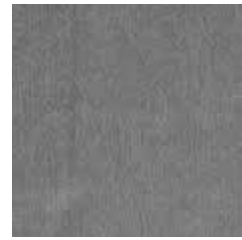
100



101



770



920

Wash Towel

30x30cm - 12"x12"

Hand Towel

40x75cm - 17"x30"  
55x100cm - 21"x39"

Bath Towel

70x140cm - 28"x54"

Bath Sheet

100x150cm - 39"x59"

CUSTOM COLOURS AVAILABLE

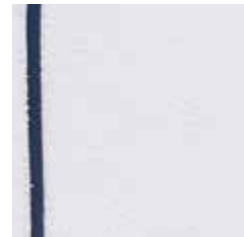


# SAXO

100% GIZA - EGYPTIAN COTTON EXTRA LONG STAPLE | 500g/m<sup>2</sup>



101



332



711



992

Mitt

17x22cm - 7"x9"

Wash Towel

30x30cm - 12"x12"

Hand Towel

40x75cm - 17"x30"  
55x100cm - 21"x39"

Bath Towel

70x140cm - 28"x54"

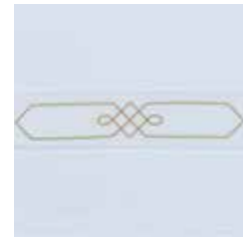
Bath Sheet

100x150cm - 39"x59"



# SPENCER

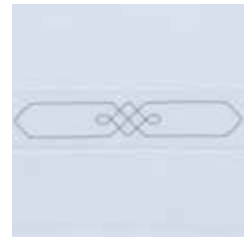
100% GIZA - EGYPTIAN COTTON EXTRA LONG STAPLE | 550g/m<sup>2</sup>



108

Wash Towel

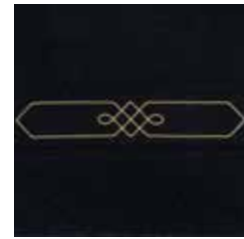
30x30cm - 12"x12"



109

Hand Towel

40x75cm - 17"x30"  
55x100cm - 21"x39"



998

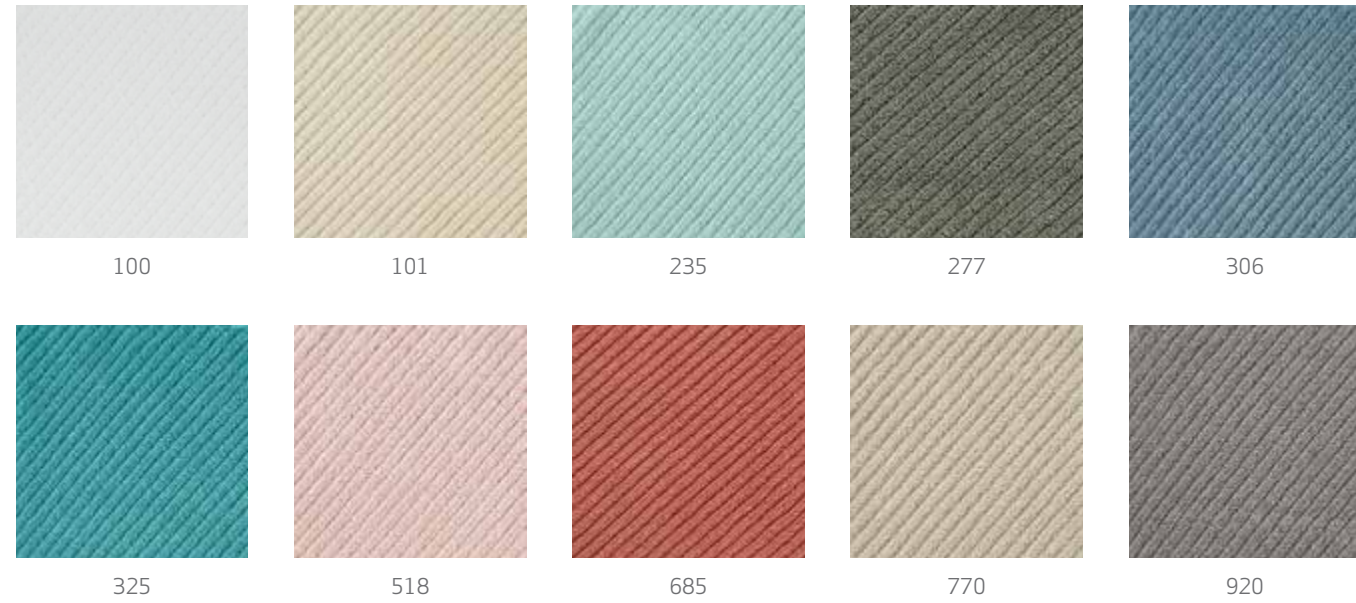
Bath Towel

70x140cm - 28"x54"



# SUPER TWILL

100% GIZA - EGYPTIAN COTTON EXTRA LONG STAPLE | 600g/m<sup>2</sup>



Wash Towel

30x30cm - 12"x12"

Hand Towel

40x75cm - 17"x30"  
55x100cm - 21"x39"

Bath Towel

70x140cm - 28"x54"

Bath Sheet

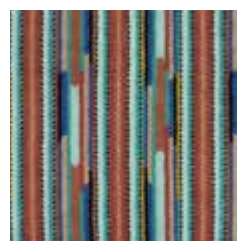
100x150cm - 39"x59"

CUSTOM SIZES & COLOURS AVAILABLE



# TEQUILA

100% GIZA - EGYPTIAN COTTON EXTRA LONG STAPLE | 500g/m<sup>2</sup>



304

Wash Towel

30x30cm - 12"x12"

Hand Towel

40x75cm - 17"x30"  
55x100cm - 21"x39"  
60x110cm - 23"x43"

Bath Towel

70x140cm - 28"x54"

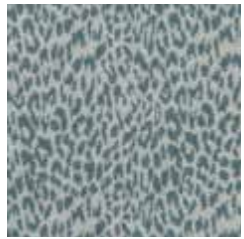
Bath Sheet

100x150cm - 39"x59"

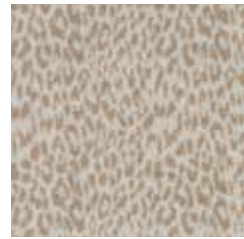


# ZIMBA

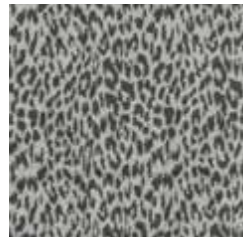
100% GIZA - EGYPTIAN COTTON EXTRA LONG STAPLE | 500g/m<sup>2</sup>



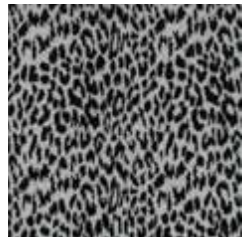
309



770



920



990

Wash Towel

30x30cm - 12"x12"

Hand Towel

40x75cm - 17"x30"  
55x100cm - 21"x39"

Bath Towel

70x140cm - 28"x54"

Bath Sheet

100x150cm - 39"x59"





## Imagine

Choose from our cornucopia of amazing colors. Our towels and rugs are dyed by masters with a vast experience using the most excellent and environmental-friendly dyes. Resulting in beautiful colors that survive the test of time. Besides this excellency in dying, our collection for yachts, swimming pools and seaside holidays are chlorine and UV resistant.



# SUPER PILE ROBE

100% GIZA - EGYPTIAN COTTON EXTRA LONG STAPLE | 700g/m<sup>2</sup>



100



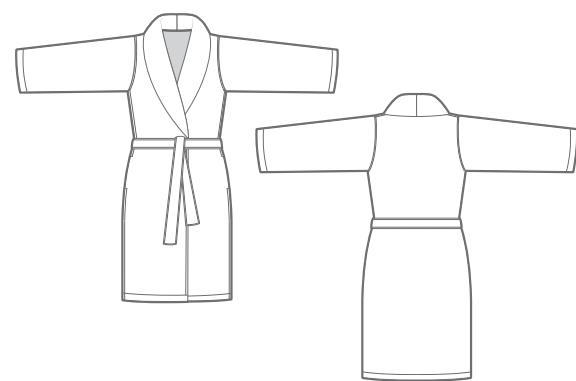
101



770



940



5 Sizes

S - M - L - XL - XXL

CUSTOM SIZES & COLOURS AVAILABLE



# CAPUZ TWILL ROBE

100% GIZA - EGYPTIAN COTTON EXTRA LONG STAPLE | 500g/m<sup>2</sup>



100



101



302



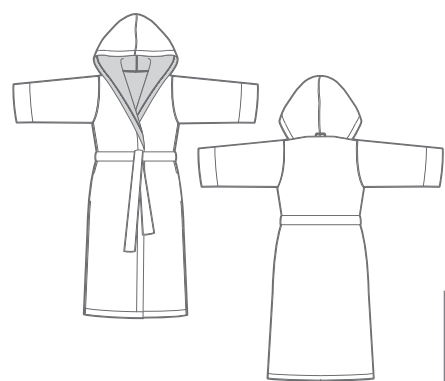
304



770



940



5 Sizes

S - M - L - XL - XXL



Kids  
4 Sizes

Years  
4/6 - 6/8 - 8/10 - 10/12

CUSTOM SIZES & COLOURS AVAILABLE



# AMIGO ROBE

100% GIZA - EGYPTIAN COTTON EXTRA LONG STAPLE | 400g/m<sup>2</sup>



100



101



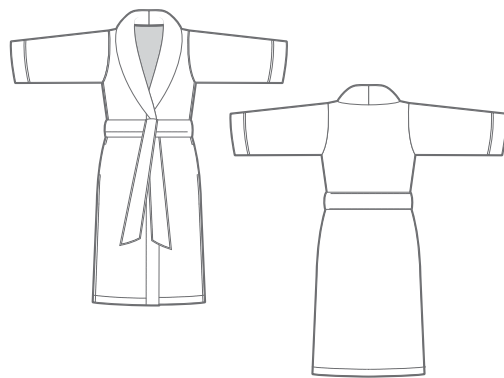
230



770



940



5 Sizes

S - M - L - XL - XXL

CUSTOM SIZES & COLOURS AVAILABLE



# DREAM ROBE

100% GIZA - EGYPTIAN COTTON EXTRA LONG STAPLE | 300g/m<sup>2</sup>



332



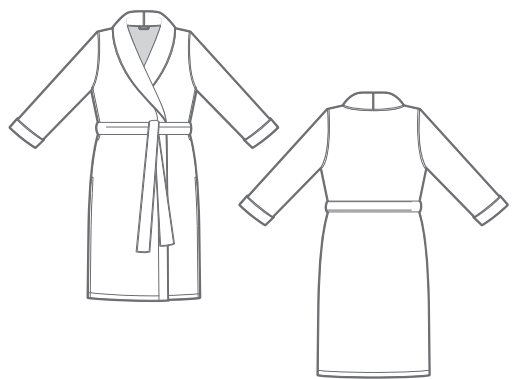
711



920



990



4 Sizes

S - M - L - XL



# FINO ROBE

100% GIZA - EGYPTIAN COTTON EXTRA LONG STAPLE | 450g/m<sup>2</sup>



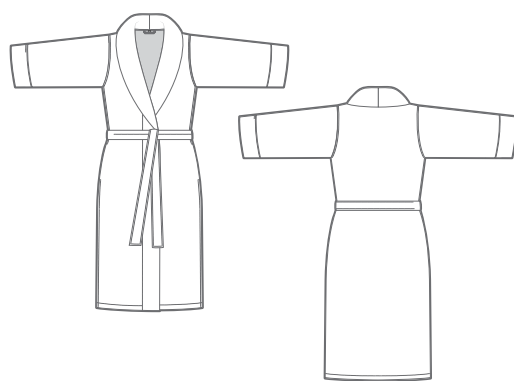
302



332



770



4 Sizes

S - M - L - XL

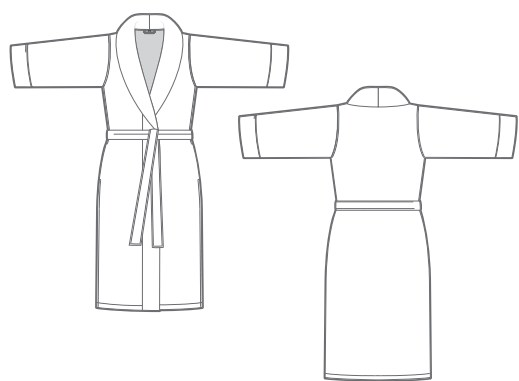


# LULABI ROBE

100% GIZA - EGYPTIAN COTTON EXTRA LONG STAPLE | 450g/m<sup>2</sup>



302



4 Sizes

S - M - L - XL

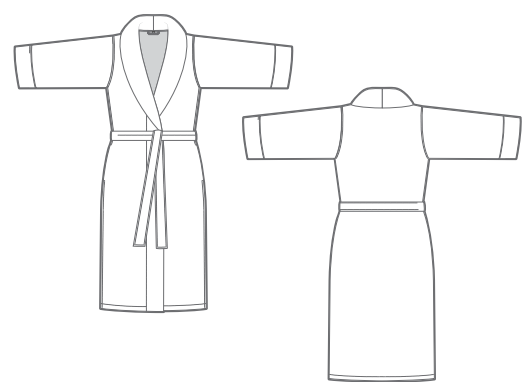


# METIS ROBE

100% GIZA - EGYPTIAN COTTON EXTRA LONG STAPLE | 450g/m<sup>2</sup>



101



4 Sizes

S - M - L - XL



# POUSADA ROBE

100% GIZA - EGYPTIAN COTTON EXTRA LONG STAPLE | 300g/m<sup>2</sup>



100



101



235



306



325



383



518



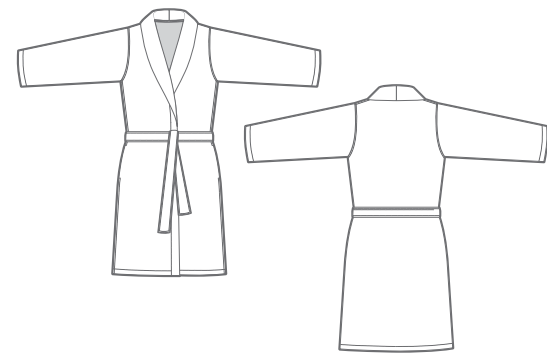
685



770



920



4 Sizes

S - M - L - XL

CUSTOM SIZES & COLOURS AVAILABLE





# SAXO ROBE

100% GIZA - EGYPTIAN COTTON EXTRA LONG STAPLE | 500g/m<sup>2</sup>



101



332



711



992



4 Sizes

S - M - L - XL



# SPA ROBE

100% GIZA - EGYPTIAN COTTON EXTRA LONG STAPLE | 350g/m<sup>2</sup>



100



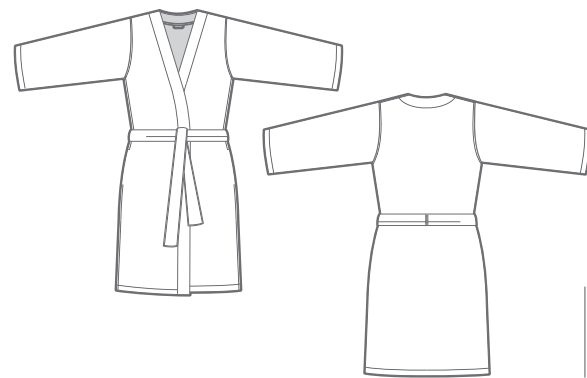
101



770



920



4 Sizes

S - M - L - XL

CUSTOM SIZES & COLOURS AVAILABLE



# SPENCER ROBE

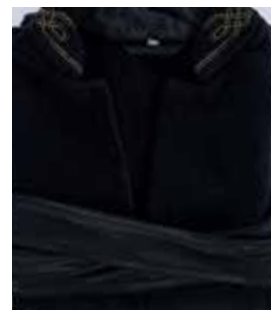
100% GIZA - EGYPTIAN COTTON EXTRA LONG STAPLE | 450g/m<sup>2</sup>



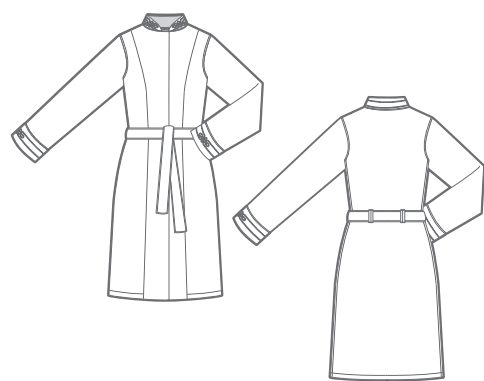
108



109



998



4 Sizes

S - M - L - XL



# ZIMBA ROBE

100% GIZA - EGYPTIAN COTTON EXTRA LONG STAPLE | 500g/m<sup>2</sup>



309



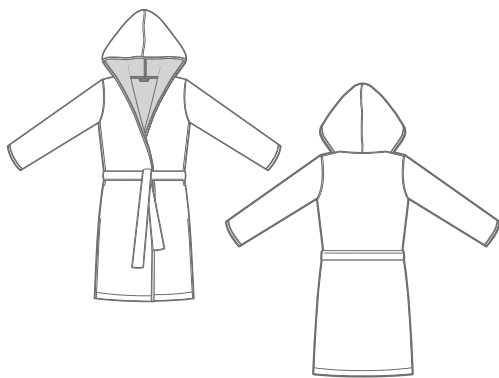
770



920



990



4 Sizes

S - M - L - XL



# A Genuine Philosophy

«Being imaginative.  
Satisfying and listening to customers.  
Dreaming and making others dream.»

That is the very essence of Abyss & Habidecor.  
It is a philosophy that elegantly combines the  
requirements of a high-quality craft and the  
beauty of products fostering a spirit of harmony.



SLIPPERS

# SUPER PILE SLIPPERS

100% GIZA - EGYPTIAN COTTON EXTRA LONG STAPLE | 700g/m<sup>2</sup>



100



101



770



940



4 Sizes

S - 35/38  
M - 38/40  
L - 40/43  
XL - 43/46

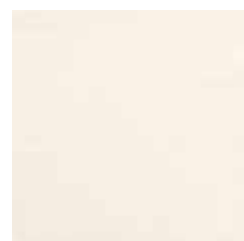


# SPA SLIPPERS

100% GIZA - EGYPTIAN COTTON EXTRA LONG STAPLE | 350g/m<sup>2</sup>



100



101



770



920



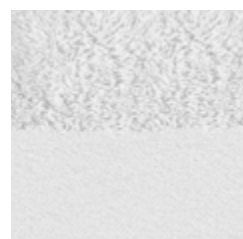
4 Sizes

S - 35/38  
M - 38/40  
L - 40/43  
XL - 43/46



# CHRISTINE SLIPPERS

100% GIZA - EGYPTIAN COTTON EXTRA LONG STAPLE | 400g/m<sup>2</sup>



100



101



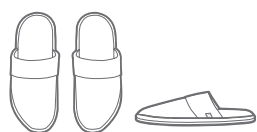
230



770



940



4 Sizes

S - 35/38  
M - 38/40  
L - 40/43  
XL - 43/46





# FINO SLIPPERS

100% GIZA - EGYPTIAN COTTON EXTRA LONG STAPLE | 450g/m<sup>2</sup>



302



332



770



4 Sizes

S - 35/38  
M - 38/40  
L - 40/43  
XL - 43/46



# LULABI SLIPPERS

100% GIZA - EGYPTIAN COTTON EXTRA LONG STAPLE | 450g/m<sup>2</sup>



302



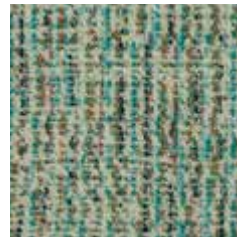
4 Sizes

S - 35/38  
M - 38/40  
L - 40/43  
XL - 43/46

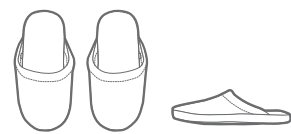


# METIS SLIPPERS

100% GIZA - EGYPTIAN COTTON EXTRA LONG STAPLE | 450g/m<sup>2</sup>



101



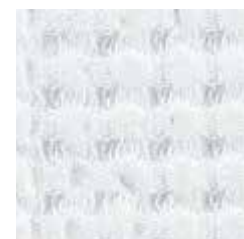
4 Sizes

S - 35/38  
M - 38/40  
L - 40/43  
XL - 43/46



# POUSADA SLIPPERS

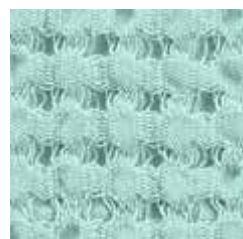
100% GIZA - EGYPTIAN COTTON EXTRA LONG STAPLE | 300g/m<sup>2</sup>



100



101



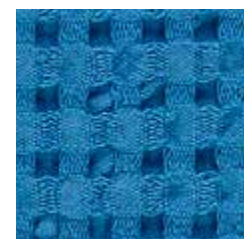
235



306



325



383



518



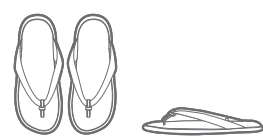
685



770



920



4 Sizes

S - 35/38  
M - 38/40  
L - 40/43  
XL - 43/46



# SAXO SLIPPERS

100% GIZA - EGYPTIAN COTTON EXTRA LONG STAPLE | 500g/m<sup>2</sup>



101



332



711



992



4 Sizes

S - 35/38  
M - 38/40  
L - 40/43  
XL - 43/46





## Embraced by the Ocean

Our home country, is embraced by the great blue Atlantic Ocean, which we respect so much. The Abyss & Habidecor products being durable and absorbent, a result of using the best precious fibres, is contributing to high quality linens that you can enjoy for a long time. Our products are pre-washed and pre-shrunk, to guarantee them holding up, wash after wash.

Our onsite biological water treatment station cleans the water in an Eco-friendly way. In this way we express our respect to the water. Moreover, the products we use in the various production processes have been chosen with respect for water and nature.

# CANNES

100% GIZA - EGYPTIAN COTTON EXTRA LONG STAPLE | 550g/m<sup>2</sup>



100



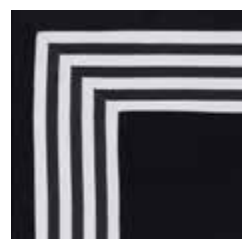
309



332



711



990



Beach Towel

90x200cm - 35"x78"



# GOA

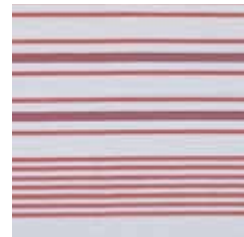
100% GIZA - EGYPTIAN COTTON EXTRA LONG STAPLE | 350g/m<sup>2</sup>



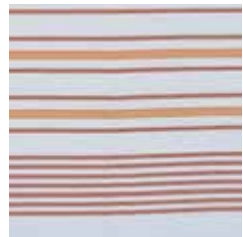
302



332



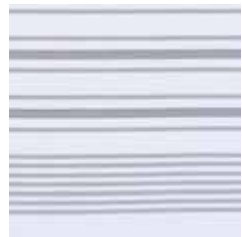
552



614



830



940



Beach Towel

100x200cm - 39"x78"





# MONO

100% GIZA - EGYPTIAN COTTON EXTRA LONG STAPLE | 450g/m<sup>2</sup>



314



Beach Towel

115x200cm - 45"x78"



# OASIS

100% GIZA - EGYPTIAN COTTON EXTRA LONG STAPLE | 450g/m<sup>2</sup>



302



Beach Towel

115x200cm - 45"x78"



# PORTOFINO

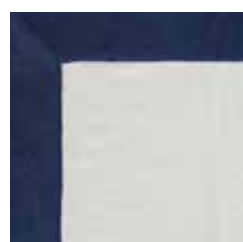
100% GIZA - EGYPTIAN COTTON EXTRA LONG STAPLE | 550g/m<sup>2</sup>



101



302



332



770



850



101



302



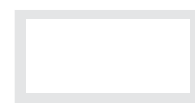
332



770



850



Beach Towel

100x200cm - 39"x78"



Pillow

50x50cm - 20"x20"



# PRADO

100% GIZA - EGYPTIAN COTTON EXTRA LONG STAPLE | 400g/m<sup>2</sup>



302

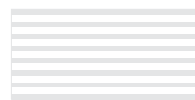
332

770

830

940

990



Beach Towel

100x200cm - 39"x78"



# ROMA

100% GIZA - EGYPTIAN COTTON EXTRA LONG STAPLE | 450g/m<sup>2</sup>



383



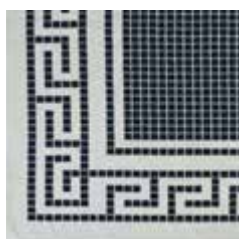
Beach Towel

115x200cm - 45"x78"



# SAMOS

100% GIZA - EGYPTIAN COTTON EXTRA LONG STAPLE | 450g/m<sup>2</sup>



314



Beach Towel

115x200cm - 45"x78"



# SINTRA

100% GIZA - EGYPTIAN COTTON EXTRA LONG STAPLE | 450g/m<sup>2</sup>



383



Beach Towel

115x200cm - 45"x78"



# All about Quality

We offer products made of the finest cotton and exclusive linen.  
Abyss & Habidecor is devoted to deliver excellence to each client.  
Combining quality and craftsmanship, with an eye for detail, in each step of the production.





# BAG

100% GIZA - EGYPTIAN COTTON



302



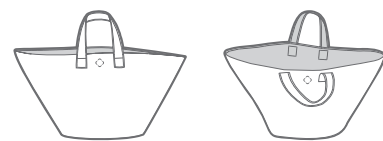
332



770



990



61x33cm - 24"x13"



# BEAUTY PADS

100% GIZA - EGYPTIAN COTTON EXTRA LONG STAPLE



103



11x11x14cm  
4"x4"x5"

10x10cm  
4"x4"

10 PADS INCLUDED



# LEGEND

100% GIZA - EGYPTIAN COTTON EXTRA LONG STAPLE



399  
BLUE / GREEN  
30 Towels



599  
NUDE / BLUSH  
30 Towels



899  
ECRU / GREY / BEIGE  
30 Towels



14,5x35cm - 6"x14"



Ø 23cm - Ø 9"



# LULABI CASE

100% GIZA - EGYPTIAN COTTON EXTRA LONG STAPLE



302

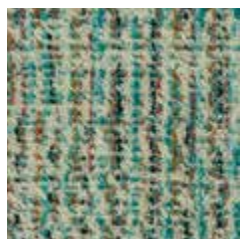


35x15x15cm - 13"x5"x5"



# METIS CASE

100% GIZA - EGYPTIAN COTTON EXTRA LONG STAPLE



101



35x15x15cm - 13"x5"x5"



# POUSADA CASE

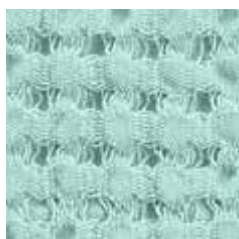
100% GIZA - EGYPTIAN COTTON EXTRA LONG STAPLE



100



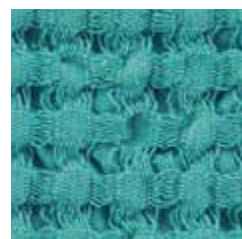
101



235



306



325



383



518



685



770



920



27x11x14cm - 10"x4"x5"

CUSTOM COLOURS AVAILABLE

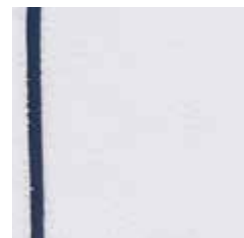


# SAXO HAIR TOWEL

100% GIZA - EGYPTIAN COTTON EXTRA LONG STAPLE | 500g/m<sup>2</sup>



101



332



711



992



68x25cm - 10"x26"

CUSTOM COLOURS AVAILABLE

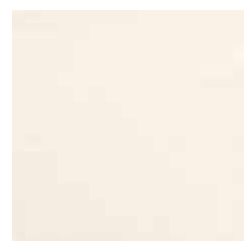


# SPA HAIR TOWEL

100% GIZA - EGYPTIAN COTTON EXTRA LONG STAPLE | 350g/m<sup>2</sup>



100



101



770



920



68x25cm - 10"x26"

CUSTOM COLOURS AVAILABLE





# NATURAL SOAP

NATURAL SOAP | 150g



800  
MIEL



750  
CHÈVRE



200  
OLIVE



700  
EUCALYPTUS



400  
VINHO



ca.  
10x8cm  
ca. 4"x3"



ca.  
4.5x4.5cm  
ca. 1.8"x1.8"





## Creative

Our creative team explores current trends, captures details and creates artistic collages, expanding the choice of designs and colours every season. To serve your personal mood, any idea is made possible at Abyss & Habidecor, by our artisans.

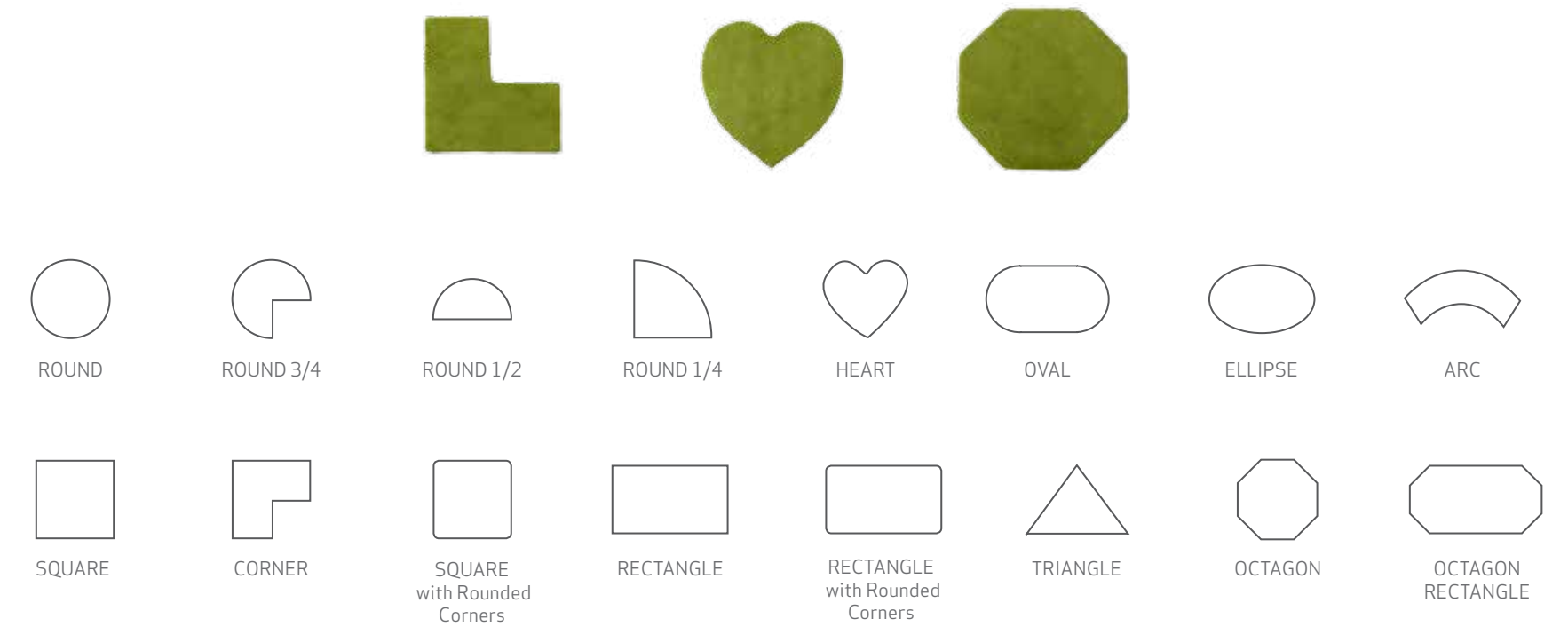
# 60 COLOURS

RUGS | TOWELS | ROBES | SLIPPERS | BEACH | ACCESSORIES



# SPECIAL SHAPES

RUGS 100% GIZA - EGYPTIAN COTTON LONG STAPLE | 1800g/m<sup>2</sup>



CUSTOM SIZES & COLOURS AVAILABLE  
 MAX. WIDTH: 1,9M or 75" - MAX. LENGTH: 3M or 118"

# EMBROIDERY

TOWELS | ROBES



CENTURY



CLASSICAL



SIDNEY



MODERN



SERIF



DIAMOND

<p>[ A ] [ b ]</p>	<p>Century                  ABCDEFGHIJKLMNOPQRSTUVWXYZ                  abcdefghijklmnopqrstuvwxyz</p>
<p>[ A ] [ b ]</p>	<p>Classical  <i>ABCDEFGHIJKLMNOPQRSTUVWXYZ</i>  <i>abcdefghijklmnopqrstuvwxyz</i></p>
<p>[ A ]</p>	<p>Sydney  <i>ABCDEFGHIJKLMNOPQRSTUVWXYZ</i></p>
<p>[ A ]</p>	<p>Modern                  ABCDEFGHIJKLMNOPQRSTUVWXYZ</p>
<p>[ A ]</p>	<p>Diamond                  AA BB CC DD EE FF GG HH II JJ KK LL MM                  NN OO PP QQ RR SS TT UU VV WW XX YY ZZ</p>
<p>[ BAC ]</p>	<p>Serif                  ABCDEFGHIJKLMNOPQRSTUVWXYZ</p>

# CARE INSTRUCTIONS

## General Up Keep

- If a thread is pulled in the towel: using scissors, carefully cut the snagged yarn at pile height
- Wash separately from other textiles and garments; items with buttons, zippers, hooks and velcro will snag the terry
- Certain cleaning and hygiene products contain ingredients which cause bleaching, some of these include blemish/anti-aging creams, product with alpha hydroxyl and fruit acid, hair coloring products, bathroom cleaners and teeth whiteners
- All of our products are pre-washed to prevent shrinkage

## Washing

- Do not overload the washing machine
- Use medium temperatures when washing (40°)
- Do not use detergents containing brighteners and whitening agents that may alter or fade colours
- Separate whites and light colours from dark coloured textiles
- Do not use bleach or fabric softeners
- We suggest the use of liquid soap

## Drying

- It's important to use a tumble dryer to restore volume and loft to the towels and rugs
- Use medium temperatures when drying
- Be sure to dry thoroughly to preserve the durability of textiles

TOWELS     

RUGS    





SINCERE THANKS TO:

**Herdade da Malhadinha Nova** - Beja . Portugal

**The Yeatman Hotel** - Vila Nova de Gaia . Portugal

**Quinta de Lemos / Mesa de Lemos** - Viseu . Portugal



[www.abysshabidecor.com](http://www.abysshabidecor.com)